



Sec23B Polyclonal Antibody

Catalog No	YP-Ab-00721
Isotype	IgG
Reactivity	Human;Mouse
Applications	WB;ELISA;IHC
Gene Name	SEC23B
Protein Name	Protein transport protein Sec23B
Immunogen	The antiserum was produced against synthesized peptide derived from human Sec23B. AA range:495-544
Specificity	Sec23B Polyclonal Antibody detects endogenous levels of Sec23B protein.
Formulation	Liquid in PBS containing 50% glycerol, 0.5% BSA and 0.02% sodium azide.
Source	Polyclonal, Rabbit,IgG
Purification	The antibody was affinity-purified from rabbit antiserum by affinity-chromatography using epitope-specific immunogen.
Dilution	WB 1:500-2000;IHC-p 1:50-300; ELISA 2000-20000
Concentration	1 mg/ml
Purity	≥90%
Storage Stability	-20°C/1 year
Synonyms	SEC23B; Protein transport protein Sec23B; SEC23-related protein B
Observed Band	86kD
Cell Pathway	Cytoplasmic vesicle, COPII-coated vesicle membrane ; Peripheral membrane protein ; Cytoplasmic side . Endoplasmic reticulum membrane ; Peripheral membrane protein ; Cytoplasmic side . Cytoplasm, cytosol .
Tissue Specificity	Ubiquitously expressed.
Function	function:Component of the COPII coat, that covers ER-derived vesicles involved in transport from the endoplasmic reticulum to the Golgi apparatus. COPII acts in the cytoplasm to promote the transport of secretory, plasma membrane, and vacuolar proteins from the endoplasmic reticulum to the Golgi complex.,similarity:Belongs to the SEC23/SEC24 family. SEC23 subfamily.,subunit:COPII is composed of at least five proteins: the Sec23/24 complex, the Sec13/31 complex and Sar1.,
Background	The protein encoded by this gene is a member of the SEC23 subfamily of the SEC23/SEC24 family, which is involved in vesicle trafficking. The encoded protein has similarity to yeast Sec23p component of COPII. COPII is the coat protein complex responsible for vesicle budding from the ER. The function of this gene product has been implicated in cargo selection and concentration. Multiple alternatively spliced transcript variants have been identified in this gene. [provided



by RefSeq, Feb 2010],

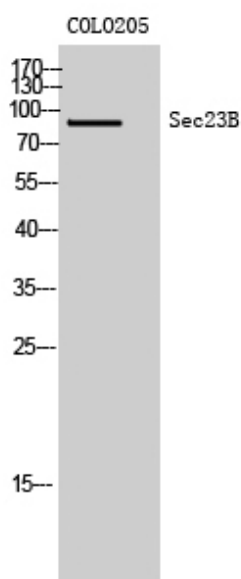
matters needing attention

Avoid repeated freezing and thawing!

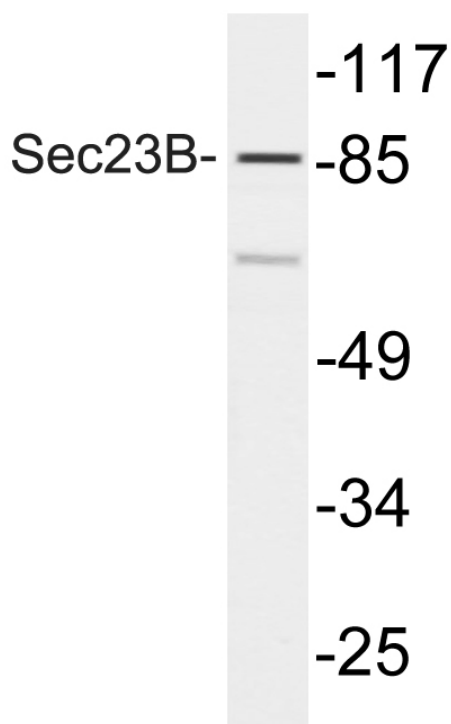
Usage suggestions

This product can be used in immunological reaction related experiments. For more information, please consult technical personnel.

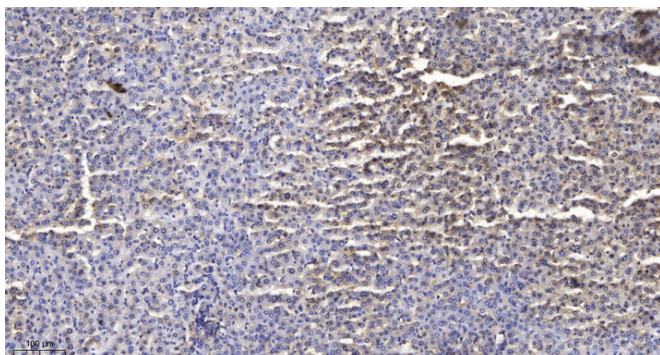
Products Images



Western Blot analysis of COLO205 cells using Sec23B Polyclonal Antibody



Western blot analysis of lysate from COLO205 cells, using Sec23B antibody.



Immunohistochemical analysis of paraffin-embedded human liver cancer. 1, Antibody was diluted at 1:200(4° overnight). 2, Tris-EDTA,pH9.0 was used for antigen retrieval. 3,Secondary antibody was diluted at 1:200(room temperature, 45min).